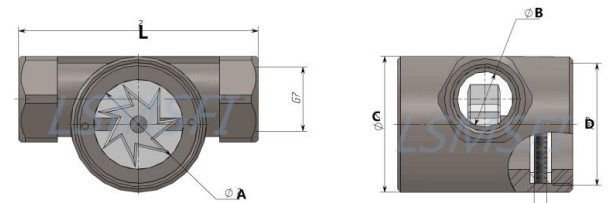
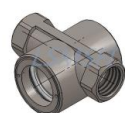


WCB Sight Flow Indicators

Product Type :SG-YL11-1
Product Sizes :DN6 to DN50(1/8”Inch to 2”Inch)
Material of Construction
Body&Cap :SS304 / SS316 / SS316L or Carbon Steel(WCB)
Sealing Gasket :PTFE(White)/NBR(Black)/Viton(Black)
Sight Glass :Tempered/Borosilicate/Quartz/Aluminosilicate Glass
Impeller/Rotor :Plastic (Red) or PTFE (Red or Blue)
Connection Way :NPT,BSPP,BSPT Female Thread
Max. Working Temperature :100°C / 212°F for Plastic Impeller&NBR or Viton Gasket
 200°C / 392°F for PTFE Impeller&Gasket
Max. Operating Pressure :1.6MPa / 16Bar / 232PSI (Up to 5.0MPa Customization)
Compatible Medium :Water / Oil / Gas / Air / Liquids



C 1/8	L:84mm	A:35mm	B:8mm	C:52mm	D:47mm	E:8mm	F:62mm	0.57Kg
C 1/4	L:84mm	A:35mm	B:12mm	C:52mm	D:47mm	E:8mm	F:62mm	0.56Kg
C 3/8	L:84mm	A:35mm	B:15mm	C:52mm	D:47mm	E:8mm	F:62mm	0.54Kg
C 1/2	L:88mm	A:35mm	B:19mm	C:52mm	D:47mm	E:8mm	F:62mm	0.65Kg
C 3/4	L:98mm	A:35mm	B:24mm	C:52mm	D:47mm	E:8mm	F:62mm	0.63Kg
C 1	L:98mm	A:35mm	B:30mm	C:52mm	D:47mm	E:8mm	F:64mm	0.70Kg
C 1 1/4	L:110mm	A:35mm	B:39mm	C:52mm	D:47mm	E:8mm	F:71mm	1.05Kg
C 1 1/2	L:119mm	A:44mm	B:45mm	C:63mm	D:55mm	E:8mm	F:81mm	1.39Kg
C 2	L:134mm	A:55mm	B:57mm	C:73mm	D:62mm	E:8mm	F:92mm	1.97Kg



Wenzhou Luosimeng Machinery Co.,Ltd.
 (Sight Flow Indicator Manufacturer)